

cemeteries, mausoleums & cremation services



If you are planning a funeral service for a loved one or preplanning your own service you are probably wondering about various burial options. While most people are familiar with traditional casket interments other types of burial options are becoming more common. Among these are the uses of cremation or interment in a mausoleum. These decisions are oftentimes difficult to make and the information and listings below can help.

The Five Types of Memorialization

1. **In-Ground Burial** - The traditional choice, in-ground burial consists of five components:

1. **Gravesite.** Also known as “space”, “plot”, “land”, or “property”.
2. **Vault.** Concrete enclosure placed in gravesite, serves as casket’s protective lining. Vault is closed and sealed after casket placement. Ensures gravesite provides safe, sure-footing for your loved ones.
3. **Casket.** Also known as “coffin”, displays and contains the deceased — either for burial or cremation.
4. **Opening-and-Closing.** Preparation of gravesite for burial service. Consists of ground opening, closing (back-filling), and landscaping (to restore gravesite’s appearance).
5. **Memorial.** Tribute installed at gravesite. Honors and celebrates a life worth remembering. Memorials are flat bronze “markers” (installed at memorial parks) or upright concrete “monuments” (installed at cemeteries).

Is an in-ground burial right for me? - A ground burial might be right if you:

- Want marker or monument memorialization
 - Prefer traditional means of burial
 - Want loved ones to place flowers and other gravesite decorations at various holidays, seasons
 - Wish to be interred next to deceased loved ones
- **Aboveground Burial: Community Mausoleum** - A community mausoleum is an aboveground building that memorializes many people. You select the space location (“crypt”), and whether you want a single or “companion” crypt (holds two). You also select crypt

location level (eye-level is most desirable for most families). Community Mausoleums enable frequent visits *in any type of weather*. Casket and opening-and-closing are necessary. Vault and memorial are not.

Is a community mausoleum burial right for me? - Community mausoleum might be right if you:

- Prefer above-ground, in-door burial
 - Want to be absolutely certain burial site is always dry
 - Want loved ones to visit in any type of weather
- **Aboveground Burial: Private Mausoleum**
Private Mausoleums (“Family Mausoleums”) provide a distinctive, separate, and, as the name suggests, private structure to memorialize you and your loved ones. Private Mausoleums enable frequent visits *in any type of weather*. It’s your own private sanctuary, providing a climate-controlled, serene, and comfortable environment where you can visit, honor, and pray with your loved ones. Caskets and opening-and-closings are necessary. Vaults and memorials are not.

Is a private mausoleum burial right for me? - Private mausoleum might be right if you:

- Prefer above-ground, in-door burial
 - Want to be absolutely certain burial site is always dry
 - Want loved ones to visit in any type of weather
 - Want absolute privacy for you and loved ones
 - Prefer to keep entire family together
- **Combination In-Ground /Aboveground Burial: Lawn Crypt** - A lawn crypt, which holds two, is similar to traditional in-ground burial, yet offers a key benefit

■ continued on page 34

inherit with aboveground burial: the space remains clean and dry. Caskets, memorial, and opening-and-closings are necessary. Vaults are not.

Is a lawn crypt burial right for me? - Lawn crypt might be right if you:

- Want marker or monument memorialization
 - Prefer traditional means of burial
 - Want loved to place flowers and other gravesite decorations at various holidays, seasons
 - Wish to be buried next to deceased loved ones
 - Want added benefit of dryer gravesite (stemming from water drainage system)
- **Cremation** - For some, cremation feels like the right choice. A “crematorium” performs the cremation. There are many options for memorializing the cremated. Some choose to scatter cremated remains (“ashes”) in a cemetery scattering garden, at sea, or other place with special meaning. Others choose to place ashes

in a cremation “urn”, burying the urn in a gravesite space, urn garden, community mausoleum “niche”, or “columbarium” (urn mausoleum). Some even choose to place the urn in the survivor’s home.

If you wish, a viewing and full funeral service can still be held. Casket is optional, depending on whether or not a “direct” cremation is performed (that is, the body is cremated immediately upon death). Vault, memorial, and opening-and-closing will be necessary if urn is buried in gravesite space. Niche opening-and-closing will be necessary if urn is placed in a mausoleum or columbarium niche.

Is cremation right for me? - Cremation might be right if you:

- Prefer above ground burial
- Prefer a lower-cost memorialization
- Wish cremated remains to remain with loved ones
- Want greater personalization with memorial



Reprinted from Aftercareplanning.com

Alternative Funeral & Cremation Services

2115 Parkway Dr., St. Peters, MO 63376
Phone: 636-498-5300

Ambruster Donnelly Mortuary

6633 Clayton Rd., St. Louis, MO 63117
Phone: 314-732-0705

Baue Funeral Homes, Crematory and Cemetery

Phone: 636-940-1000
Fax: 636-946-3084
620 Jefferson St., St. Charles, MO 63301
Website: www.baue.com
Counties Served: Franklin MO, Jefferson MO, St. Charles MO, St. Louis MO, St. Louis City MO, Bond IL, Clinton IL, Madison IL, Monroe IL, Randolph IL, St. Clair IL, Washington IL

Baumann Colonial Chapel

2504 Woodson Rd., Overland, MO 63114
Phone: 314-427-2345

Bell Funeral Home, LLC

709 West Union St., Pacific, MO 63069
Phone: 314-620-0540

Bellefontaine Cemetery

4947 West Florissant, St. Louis, MO 63115
Phone: 314-381-0750

Beth Hamedrosh Hagodel Cemetery

9125 Laude Rd., St. Louis, MO 63124
Phone: 314-991-0264

Beth Olam Of St. Louis

740 N Mason Rd.,
Creve Coeur, MO 63141
Phone: 314-434-3933

Bethlehem Cemetery

9650 Bellefontaine Rd.,
St. Louis, MO 63137
Phone: 314-867-6234

Bopp Chapel Funeral Directors

10610 Manchester Rd.,
Kirkwood, MO 63122
Phone: 314-965-7680

Broder Cremation Services, Inc.

1339 Harvestowne Industrial Dr.,
St. Charles, MO 63304
Phone: 636-447-6944

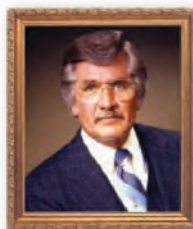
75

YEARS
...and
counting

Established 1935
Baue
Funerals • Crematory • Cemetery
Helping You Honor Life.



LISA A. BAUE
President and
3rd Generation Owner



DAVID C. BAUE
(1935-1987)



ARTHUR C. BAUE
(1907-1982)



- Three Spacious Funeral Homes
- Private On-Site Crematory
- Memorial Gardens Cemetery
- Flexible Service Pricing
- Grief Support Services
- Reception Centers
- Flower Shop
- Pet Tribute Services
- 100% Satisfaction Guarantee

GaRden OF TRanquility
SavinGS CeR TiFiCa Te

Bring this certi.cate when you visit St. Charles Memorial Gardens and receive

\$300

in credit towards the purchase of burial space in our new *Garden of Tranquility.*

PRe-PlanninG
SavinGS CeR TiFiCa Te

Make your pre-arrangements with Baue and we guarantee that you will receive up to a \$300 credit on funeral services.

\$300

Call or stop by. We'll take care of the details for you.

Customer is responsible for all applicable taxes.

636-940-1000 • baue.com • facebook • twitter

**CEMETERIES, MAUSOLEUMS &
CREMATION SERVICES - Missouri**

Buchholz Mortuaries, Inc.

1645 Redman Ave., St. Louis, MO 63138

Phone: 314-741-7400

Calvary Cemeteries Of St. Louis

5239 W Florissant, St. Louis, MO 63115

Phone: 314-381-1313

**Catholic Cemeteries of the
Archdiocese of St. Louis**

6901 Mackenzie, St. Louis, MO 63123

Phone: 314-352-5300

Celebrate Life Cremation Services

7456 Manchester Rd., Maplewood, MO 63143

Phone: 314-807-3402

Chapel Hill Mortuary & Memorial Gardens

6300 Highway 30, Cedar Hill, MO 63016

Phone: 636-274-4100

Chesed Shel Emeth Society

650 White Rd., Chesterfield, MO 63017

Phone: 314-469-1891

**Chevra Kadisha Cemetery
Association Of Saint Louis**

1601 North and South Rd., St. Louis, MO 63130

Phone: 314-427-0160

Concordia Cemetery

4209 Bates St., St. Louis, MO 63116

Phone: 314-481-8396

Cremation Association Midwest

1515 Lemay Ferry Rd., St. Louis, MO 63125

Phone: 314-544-7100

Cremation Society Of Missouri

3950 West Clay St., St. Charles, MO 63301

Phone: 636-946-9896

Cremation Society Of St. Louis

10305 Big Bend Blvd., St. Louis, MO 63122

Phone: 314-205-0022

Drehmann-Harral Funeral Home

7733 Natural Bridge Rd., St. Louis, MO 63121

Phone: 314-385-4783

Fee Fee Cemetery Assn.

11210 Old St Charles Rd., Bridgeton, MO 63044

Phone: 314-739-2415

Forever Bellerive Cemetery

740 N Mason Rd., Creve Coeur, MO 63141

Phone: 314-434-3933

Forever Oak Hill Funeral Home & Cemetery

10301 Big Bend Blvd., Kirkwood, MO 63122

Phone: 314-965-8228

Friedens Cemetery Mausoleum & Chapel

8941 N Broadway, St. Louis, MO 63137

Phone: 314-867-5126

Friends Of Father Dickson Cemetery

845 S Sappington Rd., St. Louis, MO 63126

Phone: 314-822-8221

Gebken Benz Mortuary

2842 Meramec Street, St. Louis, MO 63118

Phone: 314-752-9300

Gerber Chapel

23 W Lockwood, Webster Groves, MO 63119

Phone: 314-968-2000

Hillcrest Abbey Crematory & Mausoleum

3211 Sublette Ave., St. Louis, MO 63139

Phone: 314-645-4305

Howard H. Michel Funeral Home

5930 Southwest Ave., St. Louis, MO 63139

Phone: 314-645-4241

Kriegshauser Brothers Funeral Service

2556 S Brentwood Blvd., St. Louis, MO 63144

Phone: 314-962-0601

**Lake Charles Park Cemetery
& Garden Mausoleum**

7775 St Charles Rock Rd., St. Louis, MO 63114

Phone: 314-725-7802

Lakewood Park Cemetery

2900 Telegraph Rd., St. Louis, MO 63125

Phone: 314-892-1733

Laurel Hill

2000 Pennsylvania Ave., St. Louis, MO 63133

Phone: 314-725-7800

Lupton Chapel

7233 Delmar Blvd., St. Louis, MO 63130

Phone: 314-721-1870

Mclaughlin Funeral Home Inc.

2301 LaFayette Ave., St. Louis, MO 63104

Phone: 314-771-0717

Memorial Park Cemetery

5200 Lucas And Hunt Rd., St. Louis, MO 63121

Phone: 314-389-3500

**Mount Hope Cemetery
Mausoleum & Crematory CO**

1215 Lemay Ferry Rd., St. Louis, MO 63125

Phone: 314-544-2000

Mt. Lebanon Cemetery & Mausoleum

11101 St Charles Rock Rd., St. Ann, MO 63074

Phone: 314-739-1211

National Crematory Service

5140 Daggett Ave, St. Louis, MO 63110

Phone: 314-771-0052

**CEMETERIES, MAUSOLEUMS &
CREMATION SERVICES - Missouri & Illinois**

Neptune Society

9804 Manchester Rd., St. Louis, MO

Phone: 314-962-9600

New St. Marcus Cemetery

7901 Gravois Rd., St. Louis, MO 63123

Phone: 314-352-0227

Oak Grove Memorial Mausoleum

7800 St Charles Rock Rd., St. Louis, MO 63114

Phone: 314-721-7260

Oakdale Cemetery

3900 Mount Olive Rd., St. Louis, MO 63125

Phone: 314-544-2396

O'Sullivan-Muckle Mortuary

13996 Olive Blvd., Chesterfield, MO 63017

Phone: 314-514-9966

Our Redeemer Cemetery Inc.

8300 MacKenzie Rd., St. Louis, MO 63123

Phone: 314-631-8505

Park Lawn Cemetery

1800 Lemay Ferry Rd., St. Louis, MO 63125

Phone: 314-544-2002

Paul Funeral Home

240 N Kingshighway St., St. Charles, MO 63301

Phone: 636-724-0283

Salem Lutheran Church Cemetery

5825 Parker Rd., Florissant, MO 63033

Phone: 314-741-0424

Schrader Funeral Home

Phone: 636-227-5511

14960 Manchester Rd., Ballwin, MO 63011

Smith Jay B. Funeral Homes, Inc.

7456 Manchester Rd., Maplewood, MO 63143

Phone: 314-781-1115

St. Charles Memorial Gardens

3950 W Clay St., St. Charles, MO 63301

Phone: 636-946-6935

St. John's Cemetery

1293 St Cyr Rd., St. Louis, MO 63137

Phone: 314-867-4981

**St. Louis Cremation Service, Inc. -
Anatomy Transportation**

2135 Chouteau Ave., St. Louis, MO 63103

Phone: 314-241-8844

St. Lucas Cemetery

11735 Denny Rd., Sappington, MO 63126

Phone: 314-843-2100

St. Paul Churchyard

7600 S Rock Hill Rd., Affton, MO 63123

Phone: 314-843-4543

St. Peter's Cemetery

2101 Lucas and Hunt Road, St Louis, MO 63121-5013

Phone: 314-385-0841

St. Trinity Cemetery

2160 Lemay Ferry Rd., St. Louis, MO 63125

Phone: 314-892-3662

Stygar Family Of Funeral Services

13980 New Halls Ferry Rd., Florissant, MO 63033

Phone: 636-936-1300

Valhalla

7600 St Charles Rock Rd., St. Louis, MO 63133

Phone: 314-721-4900

Veterans Funeral Care

2119 Chouteau Ave., St. Louis, MO 63103

Phone: 314-872-8387

Ziegenhein John L. & Sons Funeral Homes

4830 Lemay Ferry Rd., St. Louis, MO 63129

Phone: 314-894-8444



Illinois Listings

Alton Cemetery

100 E. Broadway, Alton, IL 62002

Phone: 618-462-1617

Calvary Cemetery

2910 S. State Route 157, Edwardsville, IL 62025

Phone: 618-656-5464

City of Chester Cemetery

501 W. Holmes Street, Chester, IL 62233

Phone: 618-826-3441

City of Marion Cemetery

1102 Tower Square Plaza, Marion, IL 62959

Phone: 618-997-2028

City of Mascoutah Cemetery

3 W. Main Street, Mascoutah, IL 62258

Phone: 618-566-2967

City of Vandalia Cemetery

716 S. 5th Street, Vandalia, IL 62471

Phone: 618-283-3387

Elias Smith Funeral Home and Crematory

2521 Edwards Street, Alton, IL 62002

Phone: 618-465-3571

Friedens United Church of Christ Cemetery

207 E. Center Street, Troy, IL 62294

Phone: 618-667-6535

**CEMETERIES, MAUSOLEUMS &
CREMATION SERVICES - Illinois**

Green Mount Catholic Cemetery

679 S. Green Mount Road, Belleville, IL 62220

Phone: 618-234-4858

Green Mount Protestant Cemetery

Green Mount Lane, Belleville, IL 62221

Phone: 618-234-0451

Green Mt. Catholic Cemetery

2821 Green Mount Ln., Belleville, IL 62220

Phone: 618-234-4858

Hempfen Funeral Home

106 N. Broadway, Albers, IL 62215

Phone: 618-248-5408

Herr Funeral Home and Cremation

300 W. Lincoln Avenue, Caseyville, IL 62232

Phone: 618-344-1151

**Hillcrest Funeral Home,
Cemetery and Cremation**

2500 Old 51 Road, Sandoval, IL 62882

Phone: 618-532-6122

Holy Cross Cemetery

9409 Holy Cross Road, Fairview Heights, IL 62208

Phone: 618-397-0195

Lake View Memorial Gardens Cemetery

5000 N. Illinois Street, Fairview Heights, IL 62208

Phone: 618-233-7200

Mascoutah Cemetery

331 N. Country Road, Mascoutah, IL 62258

Phone: 618-566-2967

Moll Funeral Home

34 W. Main Street, Mascoutah, IL 62258

Phone: 618-566-2345

Mt. Carmel Catholic Cemetery

10101 W. Main Street, Belleville, IL 62223

Phone: 618-397-0181

**Mt. Hope Cemetery & Mausoleum
Funeral Home**

9401 W. Main Street, Belleville, IL 62223

Phone: 618-397-0510

National Cremation Service

3200 S. Belt West, Belleville, IL 62226

Phone: 618-233-3111

Pete Gaerdner Funeral Home

3412 Frank Scott Parkway West, Belleville, IL 62223

Phone: 618-234-0419

Rose Lawn Memory Gardens Cemetery

10 Erwin Piegge Boulevard, Bethalto, IL 62010

Phone: 618-377-2188

St. John Cemetery

2901 Nameoki Road, Granite City, IL 62040

Phone: 618-877-0542

St. John's Cemetery Association

105 National Terrace, Collinsville, IL 62234

Phone: 618-344-0749

St. Joseph's Cemetery

525 E. 4th Street, Alton, IL 62002

Phone: 618-465-4284

St. Patrick's Cemetery

2801 Greenwood Lane, Godfrey, IL 62035

Phone: 618-466-0252

St. Peter & Paul Catholic Cemetery

636 E. Main Street, 207 Vandalia, Collinsville, IL 62234

Phone: 618-345-4343

Sunset Garden of Memory Cemetery

3230 Cemetery Road, Millstadt, IL 62260

Phone: 618-538-5700

**Sunset Hill Funeral Home,
Cemetery and Cremation Services**

50 Fountain Drive, Glen Carbon, IL 62034

Phone: 618-656-3220

Sunset Memorial Park Cemetery

130 S. Washington Street, Du Quoin, IL 62832

Phone: 618-542-4433

The Neptune Society

2580-2584 Devon Avenue, Des Plaines, IL 62218

Phone: 800-637-8863

Upper Alton Cemetery

2090 Oakwood Avenue, Alton, IL 62002

Phone: 618-462-1672

Valhalla Gardens of Memory and Cremation

3412 Frank Scott Parkway West, Belleville, IL 62223

Phone: 618-233-3110

Valhalla Memorial Park Cemetery

2308 W. Delmar Avenue, Godfrey, IL 62035

Phone: 618-466-2442

Valley View Cemetery and Mausoleum

1564 Lewis Road, Edwardsville, IL 62025

Phone: 618-656-0920

Walnut Hill Cemetery

1101 Mascoutah Avenue, Belleville, IL 62220

Phone: 618-257-3330

Wanda Cemetery

915 Indiana Avenue, South Roxana, IL 62087

Phone: 618-254-2007

Woodland Hill Cemetery

370 6th Street, East Alton, IL 62024

Phone: 618-259-0427

Woodlawn Cemetery

1400 St. Louis Street, Edwardsville, IL 62025

Phone: 618-656-6309